

## Purified Anti-Human CD21 Antibody[HI21a]

catalog number: E-AB-F1320A

**Note:** Centrifuge before opening to ensure complete recovery of vial contents.

### Description

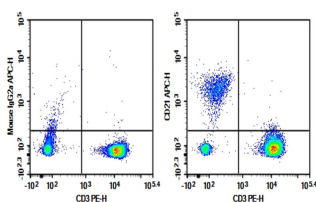
<b>Reactivity</b>	Human
<b>Immunogen</b>	Recombinant Human CD21 protein
<b>Host</b>	Mouse
<b>Isotype</b>	Mouse IgG2a, κ
<b>Clone</b>	HI21a
<b>Purification</b>	>98%, Protein A/G purified
<b>Buffer</b>	Phosphate-buffered solution, pH 7.2, containing 0.05% non-protein stabilizer. Dialyze to completely remove the stabilizer prior to labeling.

### Applications

### Recommended Dilution

<b>FCM</b>	2 µg/mL (0.5×10 <sup>6</sup> -1×10 <sup>6</sup> cells)
------------	--------------------------------------------------------

### Data



Human peripheral blood lymphocytes were stained with 0.2 µg Purified Anti-Human CD21 Antibody[HI21a] (Right) and 0.2 µg Mouse IgG2a, κ Isotype Control (Left), followed by APC-conjugated Goat Anti-Mouse IgG Secondary Antibody, then anti-Human CD3 PE-conjugated Monoclonal Antibody.

### Preparation & Storage

<b>Storage</b>	Store at 4°C valid for 12 months or -20°C valid for long term storage, avoid freeze / thaw cycles.
<b>Shipping</b>	Ice bag

### Background

CD21 is a 145 kD transmembrane protein also known as complement C3d receptor (C3dR), complement receptor 2 (CR2), and Epstein-Barr virus receptor. CD21 is expressed on B cells, follicular dendritic cells, subsets of normal thymocytes and T cells, and some epithelial cells. CD21 is the receptor used by Epstein-Barr virus to infect B cells and is also the complement receptor for C3d. CD21 has also been shown to interact with a number of proteins, including CD23, CD19, annexin VI, CD81, iC3b, complement receptor 1 (CR1, CD35), and interferon-alpha 1 (IFN-α1).

### For Research Use Only